

**HIGHLIGHTS OF PRESCRIBING INFORMATION**

These highlights do not include all the information needed to use ZOLPIDEM TARTRATE EXTENDED-RELEASE TABLETS safely and effectively. See full prescribing information for ZOLPIDEM TARTRATE EXTENDED-RELEASE TABLETS.

ZOLPIDEM TARTRATE extended-release tablets, for oral use C-IV  
Initial U.S. Approval: 1992

**WARNING: COMPLEX SLEEP BEHAVIORS**

See full prescribing information for complete boxed warning.

Complex sleep behaviors including sleep-walking, sleep-driving, and engaging in other activities while not fully awake may occur following use of zolpidem tartrate extended-release tablets. Some of these events may result in serious injuries, including death. Discontinue zolpidem tartrate extended-release tablets immediately if a patient experiences a complex sleep behavior. (4, 5.1)

-----RECENT MAJOR CHANGES-----

Indications and Usage (1)	2/2022
Dosage and Administration (2.1)	2/2022
Warnings and Precautions (5.5)	2/2022
Warnings and Precautions (5.7)	2/2022

-----INDICATIONS AND USAGE-----

Zolpidem tartrate extended-release tablet, a gamma-aminobutyric acid (GABA) A receptor positive modulator, is indicated for the short-term treatment of insomnia characterized by difficulties with sleep onset and/or sleep maintenance. (1)

-----DOSAGE AND ADMINISTRATION-----

- Use the lowest dose effective for the patient and must not exceed a total of 12.5 mg daily (2.1)
- Treatment should be as short as possible (2.1)
- Recommended initial dose is a single dose of 6.25 mg for women and a single dose of 6.25 or 12.5 mg for men, immediately before bedtime with at least 7 to 8 hours remaining before the planned time of awakening (2.1)
- Geriatric patients and patients with mild to moderate hepatic impairment: Recommended dose is 6.25 mg for men and women (2.2)
- Lower doses of CNS depressants may be necessary when taken concomitantly with zolpidem tartrate extended-release tablets (2.3)
- Tablets to be swallowed whole, not to be crushed, divided or chewed (2.4)
- The effect of zolpidem tartrate extended-release tablets may be slowed if taken with or immediately after a meal (2.4)

-----DOSAGE FORMS AND STRENGTHS-----

Extended-Release Tablets: 6.25 mg and 12.5 mg. Tablets not scored. (3)

-----CONTRAINDICATIONS-----

- Patients who have experienced complex sleep behaviors after taking zolpidem tartrate extended-release tablets (4)
- Known hypersensitivity to zolpidem (4)

-----WARNINGS AND PRECAUTIONS-----

- CNS-Depressant Effects: Impaired alertness and motor coordination, including risk of morning impairment. Risk increases with dose and use with other CNS depressants and alcohol. Caution patients against driving

and other activities requiring complete mental alertness the morning after use. Instruct patients on correct use. (5.2)

- Need to Evaluate for Comorbid Diagnoses: Re-evaluate if insomnia persists after 7 to 10 days of use. (5.3)
- Severe Anaphylactic/Anaphylactoid Reactions: Angioedema and anaphylaxis have been reported. Do not rechallenge if such reactions occur. (5.4)
- Abnormal Thinking and Behavioral Changes: Changes including decreased inhibition, bizarre behavior, agitation, and depersonalization have been reported. Immediately evaluate any new onset behavioral changes. (5.5)
- Depression: Worsening of depression or, suicidal thinking may occur. Prescribe the least amount of tablets feasible to avoid intentional overdose. (5.6)
- Respiratory Depression: Consider this risk before prescribing in patients with compromised respiratory function. (5.7)
- Hepatic Impairment: Avoid zolpidem tartrate extended-release tablets use in patients with severe hepatic impairment. (5.8)
- Withdrawal Effects: Symptoms may occur with rapid dose reduction or discontinuation. (5.9, 9.3)

-----ADVERSE REACTIONS-----

Most commonly observed adverse reactions (> 10% in either elderly or adult patients) are: headache, next-day somnolence and dizziness (6.1)

To report SUSPECTED ADVERSE REACTIONS, contact Lupin Pharmaceuticals, Inc. at 1-800-399-2561 or FDA at 1-800-FDA-1088 or www.fda.gov/medwatch.

-----DRUG INTERACTIONS-----

- CNS depressants, including alcohol: Possible adverse additive CNS-depressant effects (5.2, 7.1)
- Opioids: Concomitant use may increase risk of respiratory depression (5.7, 7.1)
- Imipramine: Decreased alertness observed (7.1)
- Chlorpromazine: Impaired alertness and psychomotor performance observed (7.1)
- CYP3A4 inducers (rifampin or St. John’s wort): Combination use may decrease effect (7.2)
- Ketoconazole: Combination use may increase effect (7.2)

-----USE IN SPECIFIC POPULATIONS-----

- Pregnancy: May cause respiratory depression and sedation in neonates with exposure late in the third trimester. (8.1)
- Lactation: A lactating woman may pump and discard breast milk during treatment and for 23 hours after zolpidem tartrate extended-release tablets administration. (8.2)
- Pediatric use: Safety and effectiveness not established. Hallucinations (incidence rate 7%) and other psychiatric and/or nervous system adverse reactions were observed frequently in a study of pediatric patients with Attention-Deficit/Hyperactivity Disorder. (5.5, 8.4)

See 17 for PATIENT COUNSELING INFORMATION and Medication Guide.

Revised: 10/2023

**FULL PRESCRIBING INFORMATION: CONTENTS\***

**WARNING: COMPLEX SLEEP BEHAVIORS**

**1 INDICATIONS AND USAGE**

**2 DOSAGE AND ADMINISTRATION**

- 2.1 Dosage in Adults
- 2.2 Special Populations
- 2.3 Use with CNS Depressants
- 2.4 Administration

**3 DOSAGE FORMS AND STRENGTHS**

**4 CONTRAINDICATIONS**

**5 WARNINGS AND PRECAUTIONS**

- 5.1 Complex Sleep Behaviors
- 5.2 CNS-Depressant Effects and Next-Day Impairment
- 5.3 Need to Evaluate for Comorbid Diagnoses
- 5.4 Severe Anaphylactic and Anaphylactoid Reactions
- 5.5 Abnormal Thinking and Behavioral Changes
- 5.6 Use in Patients with Depression
- 5.7 Respiratory Depression
- 5.8 Precipitation of Hepatic Encephalopathy
- 5.9 Withdrawal Effects

**6 ADVERSE REACTIONS**

- 6.1 Clinical Trials Experience
- 6.2 Postmarketing Experience

**7 DRUG INTERACTIONS**

- 7.1 CNS-Active Drugs
- 7.2 Drugs that Affect Drug Metabolism via Cytochrome P450

**8 USE IN SPECIFIC POPULATIONS**

- 8.1 Pregnancy
- 8.2 Lactation

- 8.4 Pediatric Use

- 8.5 Geriatric Use

- 8.6 Gender Difference in Pharmacokinetics

- 8.7 Hepatic Impairment

**9 DRUG ABUSE AND DEPENDENCE**

- 9.1 Controlled Substance

- 9.2 Abuse

- 9.3 Dependence

**10 OVERDOSAGE**

- 10.1 Signs and Symptoms

- 10.2 Recommended Treatment

**11 DESCRIPTION**

**12 CLINICAL PHARMACOLOGY**

- 12.1 Mechanism of Action

- 12.2 Pharmacodynamics

- 12.3 Pharmacokinetics

**13 NONCLINICAL TOXICOLOGY**

- 13.1 Carcinogenesis, Mutagenesis, Impairment of Fertility

**14 CLINICAL STUDIES**

- 14.1 Controlled Clinical Trials

- 14.2 Studies Pertinent to Safety Concerns for Sedative/Hypnotic Drugs

**16 HOW SUPPLIED/STORAGE AND HANDLING**

**17 PATIENT COUNSELING INFORMATION**

\*Sections or subsections omitted from the full prescribing information are not listed.

## FULL PRESCRIBING INFORMATION

### WARNING: COMPLEX SLEEP BEHAVIORS

Complex sleep behaviors including sleep-walking, sleep-driving, and engaging in other activities while not fully awake may occur following use of zolpidem tartrate extended-release tablets. Some of these events may result in serious injuries, including death. Discontinue zolpidem tartrate extended-release tablets immediately if a patient experiences a complex sleep behavior [see *CONTRAINDICATIONS (4) and WARNINGS AND PRECAUTIONS (5.1)*].

## 1 INDICATIONS AND USAGE

Zolpidem tartrate extended-release tablets are indicated for the short-term treatment of insomnia characterized by difficulties with sleep onset and/or sleep maintenance (as measured by wake time after sleep onset).

The clinical trials performed in support of efficacy were up to 3 weeks (using polysomnography measurement up to 2 weeks in both adult and elderly patients) and 24 weeks (using patient-reported assessment in adult patients only) in duration [see *CLINICAL STUDIES (14)*].

## 2 DOSAGE AND ADMINISTRATION

### 2.1 Dosage in Adults

Use the lowest effective dose for the patient. The recommended initial dose is 6.25 mg for women and either 6.25 or 12.5 mg for men, taken only once per night immediately before bedtime with at least 7 to 8 hours remaining before the planned time of awakening. If the 6.25 mg dose is not effective, the dose can be increased to 12.5 mg. In some patients, the higher morning blood levels following use of the 12.5 mg dose increase the risk of next-day impairment of driving and other activities that require full alertness [see *WARNINGS AND PRECAUTIONS (5.2)*]. The total dose of zolpidem tartrate extended-release tablets should not exceed 12.5 mg once daily immediately before bedtime. Zolpidem tartrate extended-release tablets should be taken as a single dose and should not be readministered during the same night.

The recommended initial doses for women and men are different because zolpidem clearance is lower in women.

Treatment with zolpidem tartrate extended-release tablet should be as short as possible. Extended treatment should not take place without re-evaluation of the patient's status, since the risk of abuse and dependence increases with duration of treatment [see *DRUG ABUSE AND DEPENDENCE (9.3)*].

### 2.2 Special Populations

Elderly or debilitated patients may be especially sensitive to the effects of zolpidem tartrate. The recommended dose of zolpidem tartrate extended-release tablet in these patients is 6.25 mg once daily immediately before bedtime [see *WARNINGS AND PRECAUTIONS (5.2), USE IN SPECIFIC POPULATIONS (8.5)*].

Patients with mild to moderate hepatic impairment do not clear the drug as rapidly as normal subjects. The recommended dose of zolpidem tartrate extended-release tablets in these patients is 6.25 mg once daily immediately before bedtime. Avoid zolpidem tartrate extended-release tablets use in patients with severe hepatic impairment as it may contribute to encephalopathy [see *WARNINGS AND PRECAUTIONS (5.8), USE IN SPECIFIC POPULATIONS (8.7), CLINICAL PHARMACOLOGY (12.3)*].

### **2.3 Use with CNS Depressants**

Dosage adjustment may be necessary when zolpidem tartrate extended-release tablets are combined with other CNS-depressant drugs because of the potentially additive effects [see *WARNINGS AND PRECAUTIONS (5.2, 5.7)*].

### **2.4 Administration**

Zolpidem tartrate extended-release tablets should be swallowed whole, and not be divided, crushed, or chewed. The effect of zolpidem tartrate extended-release tablets may be slowed by ingestion with or immediately after a meal.

## **3 DOSAGE FORMS AND STRENGTHS**

Zolpidem tartrate extended-release tablets USP are available as extended-release tablets containing 6.25 mg or 12.5 mg of zolpidem tartrate for oral administration. Tablets are not scored.

Zolpidem tartrate extended-release tablets, USP 6.25 mg are pink colored, round, biconvex, film-coated tablets debossed with “E61” on one side and “LU” on the other side.

•Zolpidem tartrate extended-release tablets, USP 12.5 mg are blue colored, round, biconvex, film-coated tablets debossed with “E62” on one side and “LU” on the other side.

## **4 CONTRAINDICATIONS**

Zolpidem tartrate extended-release tablets are contraindicated in patients

- who have experienced complex sleep behaviors after taking zolpidem tartrate extended-release tablets [see *WARNINGS AND PRECAUTIONS (5.1)*].
- with known hypersensitivity to zolpidem. Observed reactions include anaphylaxis and angioedema [see *WARNINGS AND PRECAUTIONS (5.4)*].

## **5 WARNINGS AND PRECAUTIONS**

### **5.1 Complex Sleep Behaviors**

Complex sleep behaviors, including sleep-walking, sleep-driving, and engaging in other activities while not fully awake, may occur following the first or any subsequent use of zolpidem tartrate extended-release tablets. Patients can be seriously injured or injure others during complex sleep behaviors. Such injuries may result in a fatal outcome. Other complex sleep behaviors (e.g., preparing and eating food, making phone calls, or having sex) have also been reported. Patients usually do not remember these events. Postmarketing reports have shown that complex sleep behaviors may occur with zolpidem tartrate extended-release tablets alone at recommended doses, with or without the concomitant use of alcohol or other central nervous system (CNS) depressants [see *DRUG INTERACTIONS (7.1)*]. Discontinue zolpidem tartrate

extended-release tablets immediately if a patient experiences a complex sleep behavior [*see CONTRAINDICATIONS (4)*].

## **5.2 CNS-Depressant Effects and Next-Day Impairment**

Zolpidem tartrate extended-release tablets are CNS depressant and can impair daytime function in some patients even when used as prescribed. Prescribers should monitor for excess depressant effects, but impairment can occur in the absence of subjective symptoms, and may not be reliably detected by ordinary clinical exam (i.e. less than formal psychomotor testing). While pharmacodynamic tolerance or adaptation to some adverse depressant effects of zolpidem tartrate extended-release tablets may develop, patients using zolpidem tartrate extended-release tablets should be cautioned against driving or engaging in other hazardous activities or activities requiring complete mental alertness the day after use.

Additive effects occur with concomitant use of other CNS depressants (e.g., benzodiazepines, opioids, tricyclic antidepressants, alcohol), including daytime use [*see DRUG INTERACTIONS (7.1)*]. Downward dose adjustment of zolpidem tartrate extended-release tablets and concomitant CNS depressants should be considered [*see DOSAGE AND ADMINISTRATION (2.3)*].

The use of zolpidem tartrate extended-release tablet with other sedative-hypnotics (including other zolpidem products) at bedtime or the middle of the night is not recommended.

The risk of next-day psychomotor impairment is increased if zolpidem tartrate extended-release tablet is taken with less than a full night of sleep remaining (7 to 8 hours); if higher than the recommended dose is taken; if coadministered with other CNS depressants or alcohol; or coadministered with other drugs that increase the blood levels of zolpidem. Patients should be warned against driving and other activities requiring complete mental alertness if zolpidem tartrate extended-release tablets are taken in these circumstances [*see DOSAGE AND ADMINISTRATION (2)*, *CLINICAL STUDIES (14.2)*].

Vehicle drivers and machine operators should be warned that, as with other hypnotics, there may be a possible risk of adverse reactions including drowsiness, prolonged reaction time, dizziness, sleepiness, blurred/double vision, reduced alertness, and impaired driving the morning after therapy. In order to minimize this risk a full night of sleep (7 to 8 hours) is recommended.

Because zolpidem tartrate extended-release tablet can cause drowsiness and a decreased level of consciousness, patients, particularly the elderly, are at higher risk of falls.

## **5.3 Need to Evaluate for Comorbid Diagnoses**

Because sleep disturbances may be the presenting manifestation of a physical and/or psychiatric disorder, symptomatic treatment of insomnia should be initiated only after a careful evaluation of the patient. The failure of insomnia to remit after 7 to 10 days of treatment may indicate the presence of a primary psychiatric and/or medical illness that should be evaluated. Worsening of insomnia or the emergence of new thinking or behavior abnormalities may be the consequence of an unrecognized psychiatric or physical disorder. Such findings have emerged during the course of treatment with sedative/hypnotic drugs, including zolpidem.

#### **5.4 Severe Anaphylactic and Anaphylactoid Reactions**

Cases of angioedema involving the tongue, glottis or larynx have been reported in patients after taking the first or subsequent doses of sedative-hypnotics, including zolpidem. Some patients have had additional symptoms such as dyspnea, throat closing or nausea and vomiting that suggest anaphylaxis. Some patients have required medical therapy in the emergency department. If angioedema involves the throat, glottis or larynx, airway obstruction may occur and be fatal. Patients who develop angioedema after treatment with zolpidem should not be rechallenged with the drug.

#### **5.5 Abnormal Thinking and Behavioral Changes**

Abnormal thinking and behavior changes have been reported in patients treated with sedative/hypnotics, including zolpidem tartrate extended-release tablets. Some of these changes included decreased inhibition (e.g., aggressiveness and extroversion that seemed out of character), bizarre behavior, agitation and depersonalization. Visual and auditory hallucinations have been reported.

In controlled trials, <1% of adults with insomnia reported hallucinations. In a clinical trial, 7% of pediatric patients treated with Ambien 0.25 mg/kg taken at bedtime reported hallucinations versus 0% treated with placebo [see *USE IN SPECIFIC POPULATIONS (8.4)*]. There have been postmarketing reports of delirium with zolpidem use [see *ADVERSE REACTIONS (6.2)*].

It can rarely be determined with certainty whether a particular instance of the abnormal behaviors listed above is drug induced, spontaneous in origin, or a result of an underlying psychiatric or physical disorder. Nonetheless, the emergence of any new behavioral sign or symptom of concern requires careful and immediate evaluation.

#### **5.6 Use in Patients with Depression**

In primarily depressed patients treated with sedative-hypnotics, worsening of depression, and suicidal thoughts and actions (including completed suicides), have been reported. Suicidal tendencies may be present in such patients and protective measures may be required. Intentional overdose is more common in this group of patients; therefore, the lowest number of tablets that is feasible should be prescribed for the patient at any one time.

#### **5.7 Respiratory Depression**

Although studies with 10 mg zolpidem tartrate did not reveal respiratory depressant effects at hypnotic doses in healthy subjects or in patients with mild to moderate chronic obstructive pulmonary disease (COPD), a reduction in the Total Arousal Index, together with a reduction in lowest oxygen saturation and increase in the times of oxygen desaturation below 80% and 90%, was observed in patients with mild to moderate sleep apnea when treated with zolpidem compared to placebo. Since sedative-hypnotics have the capacity to depress respiratory drive, precautions should be taken if zolpidem tartrate extended-release tablets are prescribed to patients with compromised respiratory function or concomitant use with opioids or other CNS depressants. Postmarketing reports of respiratory insufficiency in patients receiving 10 mg of zolpidem tartrate, most of whom had pre-existing respiratory impairment, have been reported. The risk of respiratory depression should be considered prior to prescribing zolpidem tartrate extended-release tablets in patients with respiratory impairment including sleep apnea and

myasthenia gravis or with concomitant opioid use [*see DOSAGE AND ADMINISTRATION (2.3), DRUG INTERACTIONS (7.1)*].

### **5.8 Precipitation of Hepatic Encephalopathy**

Drugs affecting GABA receptors, such as zolpidem tartrate, have been associated with precipitation of hepatic encephalopathy in patients with hepatic insufficiency. In addition, patients with hepatic insufficiency do not clear zolpidem tartrate as rapidly as patients with normal hepatic function. Avoid zolpidem tartrate extended-release tablets use in patients with severe hepatic impairment as it may contribute to encephalopathy [*see DOSAGE AND ADMINISTRATION (2.2), USE IN SPECIFIC POPULATIONS (8.7), CLINICAL PHARMACOLOGY (12.3)*].

### **5.9 Withdrawal Effects**

There have been reports of withdrawal signs and symptoms following the rapid dose decrease or abrupt discontinuation of zolpidem. Monitor patients for tolerance, abuse, and dependence [*see DRUG ABUSE AND DEPENDENCE (9.2, 9.3)*].

## **6 ADVERSE REACTIONS**

The following serious adverse reactions are discussed in greater detail in other sections of the labeling:

- Complex Sleep Behaviors [*see WARNINGS AND PRECAUTIONS (5.1)*]
- CNS-Depressant Effects and Next-Day Impairment [*see WARNINGS AND PRECAUTIONS (5.2)*]
- Severe Anaphylactic and Anaphylactoid Reactions [*see WARNINGS AND PRECAUTIONS (5.4)*]
- Abnormal Thinking and Behavior Changes [*see WARNINGS AND PRECAUTIONS (5.5)*]
- Withdrawal Effects [*see WARNINGS AND PRECAUTIONS (5.9)*]

### **6.1 Clinical Trials Experience**

#### ***Associated with Discontinuation of Treatment***

In 3-week clinical trials in adults and elderly patients (> 65 years), 3.5% (7/201) patients receiving zolpidem tartrate extended-release tablets 6.25 or 12.5 mg discontinued treatment due to an adverse reaction as compared to 0.9% (2/216) of patients on placebo. The reaction most commonly associated with discontinuation in patients treated with zolpidem tartrate extended-release tablets were somnolence (1%).

In a 6-month study in adult patients (18 to 64 years of age), 8.5% (57/669) of patients receiving zolpidem tartrate extended-release tablets 12.5 mg as compared to 4.6% on placebo (16/349) discontinued treatment due to an adverse reaction. Reactions most commonly associated with discontinuation of zolpidem tartrate extended-release tablets included anxiety (anxiety, restlessness or agitation) reported in 1.5% (10/669) of patients as compared to 0.3% (1/349) of patients on placebo, and depression (depression, major depression or depressed mood) reported in 1.5% (10/669) of patients as compared to 0.3% (1/349) of patients on placebo.

Data from a clinical study in which selective serotonin reuptake inhibitor (SSRI)- treated patients were given zolpidem revealed that four of the seven discontinuations during

double-blind treatment with zolpidem (n=95) were associated with impaired concentration, continuing or aggravated depression, and manic reaction; one patient treated with placebo (n=97) was discontinued after an attempted suicide.

***Most Commonly Observed Adverse Reactions in Controlled Trials***

During treatment with zolpidem tartrate extended-release tablets in adults and elderly at daily doses of 12.5 mg and 6.25 mg, respectively, each for three weeks, the most commonly observed adverse reactions associated with the use of zolpidem tartrate extended-release tablets were headache, next-day somnolence, and dizziness.

In the 6-month trial evaluating zolpidem tartrate extended-release tablets 12.5 mg, the adverse reaction profile was consistent with that reported in short-term trials, except for a higher incidence of anxiety (6.3% for zolpidem tartrate extended-release tablets versus 2.6% for placebo).

***Adverse Reactions Observed at an Incidence of  $\geq 1\%$  in Controlled Trials***

The following tables enumerate treatment-emergent adverse reactions frequencies that were observed at an incidence equal to 1% or greater among patients with insomnia who received zolpidem tartrate extended-release tablets in placebo-controlled trials. Events reported by investigators were classified utilizing the MedDRA dictionary for the purpose of establishing event frequencies. The prescriber should be aware that these figures cannot be used to predict the incidence of side effects in the course of usual medical practice, in which patient characteristics and other factors differ from those that prevailed in these clinical trials. Similarly, the cited frequencies cannot be compared with figures obtained from other clinical investigators involving related drug products and uses, since each group of drug trials is conducted under a different set of conditions. However, the cited figures provide the physician with a basis for estimating the relative contribution of drug and nondrug factors to the incidence of side effects in the population studied.

The following tables were derived from results of two placebo-controlled efficacy trials involving zolpidem tartrate extended-release tablets. These trials involved patients with primary insomnia who were treated for 3 weeks with zolpidem tartrate extended-release tablets at doses of 12.5 mg (Table 1) or 6.25 mg (Table 2), respectively. The tables include only adverse reactions occurring at an incidence of at least 1% for zolpidem tartrate extended-release tablets patients and with an incidence greater than that seen in the placebo patients.

**Table 1. Incidences of Treatment-Emergent Adverse Reactions in a 3-Week Placebo-Controlled Clinical Trial in Adults (percentage of patients reporting)**

Body System Adverse Reaction*	Zolpidem Tartrate Extended-Release Tablets, 12.5 mg (N = 102)	Placebo (N = 110)
<b>Infections and infestations</b>		
Influenza	3	0
Gastroenteritis	1	0
Labyrinthitis	1	0
<b>Metabolism and nutrition disorders</b>		
Appetite disorder	1	0



<b>Body System</b> Adverse Reaction*	<b>Zolpidem Tartrate</b> <b>Extended-Release Tablets,</b> <b>12.5 mg</b> <b>(N = 102)</b>	<b>Placebo</b>  <b>(N = 110)</b>
<b>Psychiatric disorders</b>		
Hallucinations †	4	0
Disorientation	3	2
Anxiety	2	0
Depression	2	0
Psychomotor retardation	2	0
Binge eating	1	0
Depersonalization	1	0
Disinhibition	1	0
Euphoric mood	1	0
Mood swings	1	0
Stress symptoms	1	0
<b>Nervous system disorders</b>		
Headache	19	16
Somnolence	15	2
Dizziness	12	5
Memory disorders‡	3	0
Balance disorder	2	0
Disturbance in attention	2	0
Hypoesthesia	2	1
Ataxia	1	0
Paresthesia	1	0
<b>Eye disorders</b>		
Visual disturbance	3	0
Eye redness	2	0
Vision blurred	2	1
Altered visual depth perception	1	0
Asthenopia	1	0
<b>Ear and labyrinth disorders</b>		
Vertigo	2	0
Tinnitus	1	0
<b>Respiratory, thoracic and mediastinal disorders</b>		
Throat irritation	1	0
<b>Gastrointestinal disorders</b>		
Nausea	7	4
Constipation	2	0
Abdominal discomfort	1	0
Abdominal tenderness	1	0
Frequent bowel movements	1	0
Gastroesophageal reflux disease	1	0
Vomiting	1	0
<b>Skin and subcutaneous tissue disorders</b>		
Rash	1	0
Skin wrinkling	1	0
Urticaria	1	0
<b>Musculoskeletal and connective tissue disorders</b>		
Back pain	4	3
Myalgia	4	0
Neck pain	1	0
<b>Reproductive system and breast disorders</b>		

<b>Body System</b> Adverse Reaction*	<b>Zolpidem Tartrate</b> <b>Extended-Release Tablets,</b> <b>12.5 mg</b> <b>(N = 102)</b>	<b>Placebo</b>  <b>(N = 110)</b>
Menorrhagia	1	0
<b>General disorders and administration site conditions</b>		
Fatigue	3	2
Asthenia	1	0
Chest discomfort	1	0
<b>Investigations</b>		
Blood pressure increased	1	0
Body temperature increased	1	0
<b>Injury, poisoning and procedural complications</b>		
Contusion	1	0
<b>Social circumstances</b>		
Exposure to poisonous plant	1	0

\* Reactions reported by at least 1% of patients treated with zolpidem tartrate extended-release tablets and at greater frequency than in the placebo group.

† Hallucinations included hallucinations NOS as well as visual and hypnagogic hallucinations.

‡ Memory disorders include: memory impairment, amnesia, anterograde amnesia.

**Table 2. Incidences of Treatment-Emergent Adverse Reactions in a 3-Week Placebo-Controlled Clinical Trial in Elderly (percentage of patients reporting)**

<b>Body System</b> Adverse Reaction *	<b>Zolpidem Tartrate</b> <b>Extended-Release Tablets,</b> <b>6.25 mg</b> <b>(N=99)</b>	<b>Placebo</b>  <b>(N=106)</b>
<b>Infections and infestations</b>		
Nasopharyngitis	6	4
Lower respiratory tract infection	1	0
Otitis externa	1	0
Upper respiratory tract infection	1	0
<b>Psychiatric disorders</b>		
Anxiety	3	2
Psychomotor retardation	2	0
Apathy	1	0
Depressed mood	1	0
<b>Nervous system disorders</b>		
Headache	14	11
Dizziness	8	3
Somnolence	6	5
Burning sensation	1	0
Dizziness postural	1	0
Memory disorders †	1	0
Muscle contractions involuntary	1	0
Paresthesia	1	0
Tremor	1	0
<b>Cardiac disorders</b>		
Palpitations	2	0
<b>Respiratory, thoracic and mediastinal disorders</b>		
Dry throat	1	0
<b>Gastrointestinal disorders</b>		

<b>Body System</b> Adverse Reaction *	<b>Zolpidem Tartrate</b> <b>Extended-Release Tablets,</b> <b>6.25 mg</b> <b>(N=99)</b>	<b>Placebo</b>  <b>(N=106)</b>
Flatulence	1	0
Vomiting	1	0
<b>Skin and subcutaneous tissue disorders</b>		
Rash	1	0
Urticaria	1	0
<b>Musculoskeletal and connective tissue disorders</b>		
Arthralgia	2	0
Muscle cramp	2	1
Neck pain	2	0
<b>Renal and urinary disorders</b>		
Dysuria	1	0
<b>Reproductive system and breast disorders</b>		
Vulvovaginal dryness	1	0
<b>General disorders and administration site conditions</b>		
Influenza like illness	1	0
Pyrexia	1	0
<b>Injury, poisoning and procedural complications</b>		
Neck injury	1	0

\* Reactions reported by at least 1% of patients treated with zolpidem tartrate extended-release tablets and at greater frequency than in the placebo group.

† Memory disorders include: memory impairment, amnesia, anterograde amnesia.

### ***Dose Relationship for Adverse Reactions***

There is evidence from dose comparison trials suggesting a dose relationship for many of the adverse reactions associated with zolpidem use, particularly for certain CNS and gastrointestinal adverse events.

### ***Other Adverse Reactions Observed during the Premarketing Evaluation of Zolpidem Tartrate Extended-Release Tablets***

Other treatment-emergent adverse reactions associated with participation in zolpidem tartrate extended-release tablets studies (those reported at frequencies of <1%) were not different in nature or frequency to those seen in studies with immediate-release zolpidem tartrate, which are listed below.

### ***Adverse Events Observed during the Premarketing Evaluation of Immediate-Release Zolpidem Tartrate***

Immediate-release zolpidem tartrate was administered to 3,660 subjects in clinical trials throughout the U.S., Canada, and Europe. Treatment-emergent adverse events associated with clinical trial participation were recorded by clinical investigators using terminology of their own choosing. To provide a meaningful estimate of the proportion of individuals experiencing treatment-emergent adverse events, similar types of untoward events were grouped into a smaller number of standardized event categories and classified utilizing a modified World Health Organization (WHO) dictionary of preferred terms.

The frequencies presented, therefore, represent the proportions of the 3,660 individuals exposed to zolpidem, at all doses, who experienced an event of the type cited on at least one occasion

while receiving zolpidem. All reported treatment-emergent adverse events are included, except those already listed in the table above of adverse events in placebo-controlled studies, those coding terms that are so general as to be uninformative, and those events where a drug cause was remote. It is important to emphasize that, although the events reported did occur during treatment with Ambien, they were not necessarily caused by it.

Adverse events are further classified within body system categories and enumerated in order of decreasing frequency using the following definitions: frequent adverse events are defined as those occurring in greater than 1/100 subjects; infrequent adverse events are those occurring in 1/100 to 1/1,000 patients; rare events are those occurring in less than 1/1,000 patients.

***Autonomic Nervous System:***

Frequent: dry mouth. Infrequent: increased sweating, pallor, postural hypotension, syncope. Rare: abnormal accommodation, altered saliva, flushing, glaucoma, hypotension, impotence, increased saliva, tenesmus.

***Body as a Whole:***

Frequent: asthenia. Infrequent: chest pain, edema, falling, fever, malaise, trauma. Rare: allergic reaction, allergy aggravated, anaphylactic shock, face edema, hot flashes, increased ESR, pain, restless legs, rigors, tolerance increased, weight decrease.

***Cardiovascular System:***

Infrequent: cerebrovascular disorder, hypertension, tachycardia. Rare: angina pectoris, arrhythmia, arteritis, circulatory failure, extrasystoles, hypertension aggravated, myocardial infarction, phlebitis, pulmonary embolism, pulmonary edema, varicose veins, ventricular tachycardia.

***Central and Peripheral Nervous System:***

Frequent: ataxia, confusion, drowsiness, drugged feeling, euphoria, insomnia, lethargy, lightheadedness, vertigo. Infrequent: agitation, decreased cognition, detached, difficulty concentrating, dysarthria, emotional lability, hallucination, hypoesthesia, illusion, leg cramps, migraine, nervousness, paresthesia, sleeping (after daytime dosing), speech disorder, stupor, tremor. Rare: abnormal gait, abnormal thinking, aggressive reaction, apathy, appetite increased, decreased libido, delusion, dementia, depersonalization, dysphasia, feeling strange, hypokinesia, hypotonia, hysteria, intoxicated feeling, manic reaction, neuralgia, neuritis, neuropathy, neurosis, panic attacks, paresis, personality disorder, somnambulism, suicide attempts, tetany, yawning.

***Gastrointestinal System:***

Frequent: diarrhea, dyspepsia, hiccup. Infrequent: anorexia, constipation, dysphagia, flatulence, gastroenteritis. Rare: enteritis, eructation, esophagospasm, gastritis, hemorrhoids, intestinal obstruction, rectal hemorrhage, tooth caries.

***Hematologic and Lymphatic System:***

Rare: anemia, hyperhemoglobinemia, leukopenia, lymphadenopathy, macrocytic anemia, purpura, thrombosis.

***Immunologic System:***

Infrequent: infection. Rare: abscess herpes simplex herpes zoster, otitis externa, otitis media.

***Liver and Biliary System:***

Infrequent: abnormal hepatic function, increased SGPT. Rare: bilirubinemia, increased SGOT.

***Metabolic and Nutritional:***

Infrequent: hyperglycemia, thirst. Rare: gout, hypercholesteremia, hyperlipidemia, increased alkaline phosphatase, increased BUN, periorbital edema.

***Musculoskeletal System:***

Infrequent: arthritis. Rare: arthrosis, muscle weakness, sciatica, tendinitis.

***Reproductive System:***

Infrequent: menstrual disorder, vaginitis. Rare: breast fibroadenosis, breast neoplasm, breast pain.

***Respiratory System:***

Frequent: sinusitis. Infrequent: bronchitis, coughing, dyspnea. Rare: bronchospasm, respiratory depression, epistaxis, hypoxia, laryngitis, pneumonia.

***Skin and Appendages:***

Infrequent: pruritus. Rare: acne, bullous eruption, dermatitis, furunculosis, injection-site inflammation, photosensitivity reaction, urticaria.

***Special Senses:***

Frequent: diplopia, vision abnormal. Infrequent: eye irritation, eye pain, scleritis, taste perversion, tinnitus. Rare: conjunctivitis, corneal ulceration, lacrimation abnormal, parosmia, photopsia.

***Urogenital System:***

Frequent: urinary tract infection. Infrequent: cystitis, urinary incontinence. Rare: acute renal failure, dysuria, micturition frequency, nocturia, polyuria, pyelonephritis, renal pain, urinary retention.

**6.2 Postmarketing Experience**

The following adverse reactions have been identified during postapproval use of zolpidem tartrate extended-release tablets. Because these reactions are reported voluntarily from a population of uncertain size, it is not always possible to reliably estimate their frequency or establish a causal relationship to drug exposure.

**Liver and biliary system**

Acute hepatocellular, cholestatic or mixed liver injury with or without jaundice (i.e., bilirubin >2 x ULN, alkaline phosphatase  $\geq$ 2 x ULN, transaminase  $\geq$ 5 x ULN).

*Psychiatric disorders:* delirium

## **7 DRUG INTERACTIONS**

### **7.1 CNS-Active Drugs**

#### ***CNS Depressants***

Coadministration of zolpidem with other CNS depressants increases the risk of CNS depression. Concomitant use of zolpidem with these drugs may increase drowsiness and psychomotor impairment, including impaired driving ability [see *WARNINGS AND PRECAUTIONS (5.1, 5.2)*]. Zolpidem tartrate was evaluated in healthy volunteers in single-dose interaction studies for several CNS drugs.

#### ***Alcohol***

An additive adverse effect on psychomotor performance between alcohol and oral zolpidem was demonstrated [see *WARNINGS AND PRECAUTIONS (5.1, 5.2)*].

#### ***Opioids***

The concomitant use of zolpidem tartrate extended-release tablets with opioids may increase the risk of respiratory depression. Limit dosage and duration of concomitant use of zolpidem tartrate extended-release tablets and opioids [see *DOSAGE AND ADMINISTRATION (2.3), WARNINGS AND PRECAUTIONS (5.7)*].

#### ***Imipramine, Chlorpromazine***

Imipramine in combination with zolpidem produced no pharmacokinetic interaction other than a 20% decrease in peak levels of imipramine, but there was an additive effect of decreased alertness. Similarly, chlorpromazine in combination with zolpidem produced no pharmacokinetic interaction, but there was an additive effect of decreased alertness and psychomotor performance [see *CLINICAL PHARMACOLOGY (12.3)*].

#### ***Sertraline***

Concomitant administration of zolpidem and sertraline increases exposure to zolpidem [see *CLINICAL PHARMACOLOGY (12.3)*].

#### ***Fluoxetine***

After multiple doses of zolpidem tartrate and fluoxetine an increase in the zolpidem half-life (17%) was observed. There was no evidence of an additive effect in psychomotor performance [see *CLINICAL PHARMACOLOGY (12.3)*].

#### ***Haloperidol***

A study involving haloperidol and zolpidem revealed no effect of haloperidol on the pharmacokinetics or pharmacodynamics of zolpidem. The lack of a drug interaction following single-dose administration does not predict the absence of an effect following chronic administration [see *CLINICAL PHARMACOLOGY (12.3)*].

### **7.2 Drugs that Affect Drug Metabolism via Cytochrome P450**

Some compounds known to induce or inhibit CYP3A may affect exposure to zolpidem. The effect of drugs that induce or inhibit other P450 enzymes on the exposure to zolpidem is not known.

### ***CYP3A4 Inducers***

#### ***Rifampin:***

Rifampin, a CYP3A4 inducer, significantly reduced the exposure to and the pharmacodynamic effects of zolpidem. Use of Rifampin in combination with zolpidem may decrease the efficacy of zolpidem and is not recommended [see *CLINICAL PHARMACOLOGY (12.3)*].

#### ***St. John's wort:***

Use of St. John's wort, a CYP3A4 inducer, in combination with zolpidem may decrease blood levels of zolpidem and is not recommended.

### ***CYP3A4 Inhibitors***

#### ***Ketoconazole:***

Ketoconazole, a potent CYP3A4 inhibitor, increased the exposure to and pharmacodynamic effects of zolpidem. Consideration should be given to using a lower dose of zolpidem when a potent CYP3A4 inhibitor and zolpidem are given together [see *CLINICAL PHARMACOLOGY (12.3)*].

## **8 USE IN SPECIFIC POPULATIONS**

### **8.1 Pregnancy**

#### ***Risk Summary***

Neonates born to mothers using zolpidem late in the third trimester of pregnancy have been reported to experience symptoms of respiratory depression and sedation [see *Clinical Considerations and Data*]. Published data on the use of zolpidem during pregnancy have not reported a clear association with zolpidem and major birth defects [see *Data*]. Oral administration of zolpidem to pregnant rats and rabbits did not indicate a risk for adverse effects on fetal development at clinically relevant doses [see *Data*].

The estimated background risk of major birth defects and miscarriage for the indicated populations are unknown. All pregnancies have a background risk of birth defect, loss, or other adverse outcomes. In the U.S. general population, the estimated background risk of major birth defects and miscarriage in clinically recognized pregnancies is 2% to 4% and 15% to 20%, respectively.

#### ***Clinical Considerations***

##### ***Fetal/neonatal adverse reactions:***

Zolpidem crosses the placenta and may produce respiratory depression and sedation in neonates. Monitor neonates exposed to zolpidem tartrate extended-release tablets during pregnancy and labor for signs of excess sedation, hypotonia, and respiratory depression and manage accordingly.

#### ***Data***

##### ***Human data:***

Published data from observational studies, birth registries, and case reports on the use of zolpidem during pregnancy do not report a clear association with zolpidem and major birth defects.

There are limited postmarketing reports of severe to moderate cases of respiratory depression that occurred after birth in neonates whose mothers had taken zolpidem during pregnancy. These cases required artificial ventilation or intratracheal intubation. The majority of neonates recovered within hours to a few weeks after birth once treated.

Zolpidem has been shown to cross the placenta.

***Animal data:***

Oral administration of zolpidem to pregnant rats during the period of organogenesis at 4, 20, and 100 mg base/kg/day, which are approximately 4, 20, and 100 times the maximum recommended human dose (MRHD) of 12.5 mg/day (10 mg zolpidem base) based on mg/m<sup>2</sup> body surface area, caused delayed fetal development (incomplete fetal skeletal ossification) at maternally toxic (ataxia) doses 20 and 100 times the MRHD based on mg/m<sup>2</sup> body surface area.

Oral administration of zolpidem to pregnant rabbits during the period of organogenesis at 1, 4, and 16 mg base/kg/day, which are approximately 2, 8, and 30 times the MRHD of 12.5 mg/day (10 mg zolpidem base) based on mg/m<sup>2</sup> body surface area caused embryo-fetal death and delayed fetal development (incomplete fetal skeletal ossification) at a maternally toxic (decreased body weight gain) dose 30 times the MRHD based on mg/m<sup>2</sup> body surface area.

Oral administration of zolpidem to pregnant rats from day 15 of gestation through lactation at 4, 20, and 100 mg base/kg/day, which are approximately 4, 20, and 100 times the MRHD of 12.5 mg/day (10 mg zolpidem base) based on a mg/m<sup>2</sup> body surface area, delayed offspring growth and decreased survival at doses 20 and 100 times, respectively, the MRHD based on mg/m<sup>2</sup> body surface area.

## **8.2 Lactation**

***Risk Summary***

Limited data from published literature report the presence of zolpidem in human milk. There are reports of excess sedation in infants exposed to zolpidem through breastmilk [*see Clinical Considerations*]. There is no information on the effects of zolpidem on milk production. The developmental and health benefits of breastfeeding should be considered along with the mother's clinical need for zolpidem tartrate and any potential adverse effects on the breastfed infant from zolpidem tartrate or from the underlying maternal condition.

***Clinical Considerations***

Infants exposed to zolpidem tartrate through breastmilk should be monitored for excess sedation, hypotonia, and respiratory depression. A lactating woman may consider interrupting breastfeeding and pumping and discarding breast milk during treatment and for 23 hours (approximately 5 elimination half-lives) after zolpidem tartrate administration in order to minimize drug exposure to a breast fed infant.

## **8.4 Pediatric Use**

Zolpidem tartrate extended-release tablets are not recommended for use in children. Safety and effectiveness of zolpidem in pediatric patients below the age of 18 years have not been established.



In an 8-week study in pediatric patients (aged 6 to 17 years) with insomnia associated with attention-deficit/hyperactivity disorder (ADHD) an oral solution of zolpidem tartrate dosed at 0.25 mg/kg at bedtime did not decrease sleep latency compared to placebo. Psychiatric and nervous system disorders comprised the most frequent (> 5%) treatment emergent adverse reactions observed with zolpidem versus placebo and included dizziness (23.5% vs 1.5%), headache (12.5% vs 9.2%), and hallucinations were reported in 7% of the pediatric patients who received zolpidem; none of the pediatric patients who received placebo reported hallucinations [see *WARNINGS AND PRECAUTIONS (5.5)*]. Ten patients on zolpidem (7.4%) discontinued treatment due to an adverse reaction.

FDA has not required pediatric studies of zolpidem tartrate extended-release tablets in the pediatric population based on these efficacy and safety findings.

### **8.5 Geriatric Use**

A total of 99 elderly ( $\geq 65$  years of age) received daily doses of 6.25 mg zolpidem tartrate extended-release tablets in a 3-week placebo-controlled study. The adverse reaction profile of zolpidem tartrate extended-release tablets 6.25 mg in this population was similar to that of zolpidem tartrate extended-release tablets 12.5 mg in younger adults ( $\leq 64$  years of age). Dizziness was reported in 8% of zolpidem tartrate extended-release tablets treated patients compared with 3% of those treated with placebo.

The dose of zolpidem tartrate extended-release tablets in elderly patients is 6.25 mg to minimize adverse effects related to impaired motor and/or cognitive performance and unusual sensitivity to sedative/hypnotic drugs [see *WARNINGS AND PRECAUTIONS (5.2)*].

### **8.6 Gender Difference in Pharmacokinetics**

Women clear zolpidem tartrate from the body at a lower rate than men.  $C_{max}$  and AUC parameters of zolpidem from zolpidem tartrate extended-release tablets were, respectively, approximately 50% and 75% higher at the same dose in adult female subjects compared to adult male subjects. Between 6 and 12 hours after dosing, zolpidem concentrations were 2 to 3 fold higher in adult female compared to adult male subjects. Given the higher blood levels of zolpidem tartrate in women compared to men at a given dose, the recommended initial dose of zolpidem tartrate extended-release tablets for adult women is 6.25 mg, and the recommended dose for adult men is 6.25 or 12.5 mg.

In geriatric patients, clearance of zolpidem is similar in men and women. The recommended dose of zolpidem tartrate extended-release tablets in geriatric patients is 6.25 mg regardless of gender.

### **8.7 Hepatic Impairment**

The recommended dose of zolpidem tartrate extended-release tablets in patients with mild to moderate hepatic impairment is 6.25 mg once daily immediately before bedtime. Avoid zolpidem tartrate extended-release tablets use in patients with severe hepatic impairment as it may contribute to encephalopathy [see *DOSAGE AND ADMINISTRATION (2.2)*, *WARNINGS AND PRECAUTIONS (5.8)*, *CLINICAL PHARMACOLOGY (12.3)*].

## **9 DRUG ABUSE AND DEPENDENCE**

### **9.1 Controlled Substance**

Zolpidem tartrate is classified as a Schedule IV controlled substance by federal regulation.

### **9.2 Abuse**

Abuse and addiction are separate and distinct from physical dependence and tolerance. Abuse is characterized by misuse of the drug for non-medical purposes, often in combination with other psychoactive substances. Tolerance is a state of adaptation in which exposure to a drug induces changes that result in a diminution of one or more of the drug effects over time. Tolerance may occur to both desired and undesired effects of drugs and may develop at different rates for different effects.

Addiction is a primary, chronic, neurobiological disease with genetic, psychosocial, and environmental factors influencing its development and manifestations. It is characterized by behaviors that include one or more of the following: impaired control over drug use, compulsive use, continued use despite harm, and craving. Drug addiction is a treatable disease, using a multidisciplinary approach, but relapse is common.

Studies of abuse potential in former drug abusers found that the effects of single doses of zolpidem tartrate 40 mg were similar, but not identical, to diazepam 20 mg, while zolpidem tartrate 10 mg effects were difficult to distinguish from placebo.

Because persons with a history of addiction to, or abuse of, drugs or alcohol are at increased risk for misuse, abuse and addiction of zolpidem, they should be monitored carefully when receiving zolpidem or any other hypnotic.

### **9.3 Dependence**

Use of zolpidem tartrate extended-release tablets may lead to development of physical and/or psychological dependence. This risk of dependence increases with dose and duration of treatment. The risk of abuse and dependence is also greater in patients with history of alcohol or drug abuse. Zolpidem tartrate extended-release tablets should be used with extreme caution in patients with current or past alcohol or drug abuse

Physical dependence is a state of adaptation that is manifested by a specific withdrawal syndrome that can be produced by abrupt cessation, rapid dose reduction, decreasing blood level of the drug, and/or administration of an antagonist.

Sedative/hypnotics have produced withdrawal signs and symptoms following abrupt discontinuation. These reported symptoms range from mild dysphoria and insomnia to a withdrawal syndrome that may include abdominal and muscle cramps, vomiting, sweating, tremors, convulsions, and delirium.

The following adverse events, which are considered to meet the DSM-III-R criteria for uncomplicated sedative/hypnotic withdrawal, were reported during zolpidem tartrate extended-release tablets clinical trials following placebo substitution occurring within 48 hours following last zolpidem treatment: fatigue, nausea, flushing, lightheadedness, uncontrolled crying, emesis, stomach cramps, panic attack, nervousness, and abdominal

discomfort. These reported adverse events occurred at an incidence of 1% or less. However, available data cannot provide a reliable estimate of the incidence, if any, of dependence during treatment at recommended doses. There have been postmarketing reports of abuse, dependence and withdrawal with zolpidem.

## 10 OVERDOSAGE

### 10.1 Signs and Symptoms

In postmarketing experience of overdose with zolpidem tartrate alone, or in combination with CNS-depressant agents, impairment of consciousness ranging from somnolence to coma, cardiovascular and/or respiratory compromise, and fatal outcomes have been reported.

### 10.2 Recommended Treatment

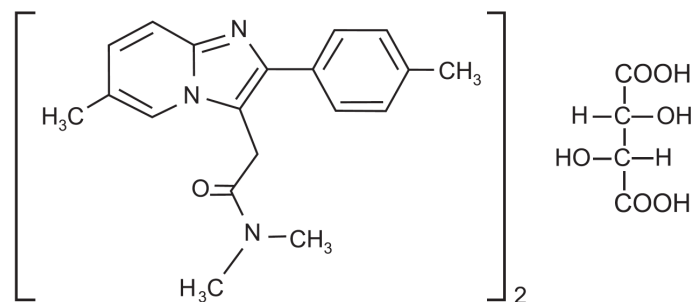
General symptomatic and supportive measures should be used along with immediate gastric lavage where appropriate. Intravenous fluids should be administered as needed. Zolpidem's sedative hypnotic effect was shown to be reduced by flumazenil and therefore may be useful; however, flumazenil administration may contribute to the appearance of neurological symptoms (convulsions). As in all cases of drug overdose, respiration, pulse, blood pressure, and other appropriate signs should be monitored and general supportive measures employed. Hypotension and CNS depression should be monitored and treated by appropriate medical intervention. Sedating drugs should be withheld following zolpidem overdose, even if excitation occurs. The value of dialysis in the treatment of overdose has not been determined, although hemodialysis studies in patients with renal failure receiving therapeutic doses have demonstrated that zolpidem is not dialyzable.

As with the management of all overdose, the possibility of multiple drug ingestion should be considered. The physician may wish to consider contacting a poison control center for up-to-date information on the management of hypnotic drug product overdose.

## 11 DESCRIPTION

Zolpidem tartrate extended-release tablets USP contains zolpidem tartrate, a gamma-aminobutyric acid (GABA) A receptor positive modulator of the imidazopyridine class. Zolpidem tartrate extended-release tablets USP are available in 6.25 mg and 12.5 mg strength tablets for oral administration.

Chemically, zolpidem is N,N,6-trimethyl-2-p-tolylimidazo[1,2-a] pyridine-3-acetamide L-(+)-tartrate (2:1). It has the following structure:



Zolpidem tartrate is a white or almost white, crystalline powder, hygroscopic that is slightly soluble in water, sparingly soluble in methanol and practically insoluble in methylene chloride. It has a molecular weight of 764.87.

Zolpidem tartrate extended-release tablets USP consist of a coated two-layer tablet: one layer that releases its drug content immediately and another layer that allows a slower release of additional drug content. The 6.25 mg zolpidem tartrate extended-release tablets USP contain the following inactive ingredients: colloidal silicon dioxide, FD&C Blue # 2 aluminium lake, hypromellose, iron oxide red, lactose monohydrate, magnesium stearate, microcrystalline cellulose, polyethylene glycol, potassium bitartrate, sodium starch glycolate and titanium dioxide. The 12.5 mg zolpidem tartrate extended-release tablets USP contain the following inactive ingredients: colloidal silicon dioxide, FD&C Blue # 2 aluminium lake, hypromellose, lactose monohydrate, magnesium stearate, microcrystalline cellulose, polyethylene glycol, potassium bitartrate, sodium starch glycolate and titanium dioxide.

Zolpidem tartrate extended-release tablets USP meets USP Dissolution Test 6.

## **12 CLINICAL PHARMACOLOGY**

### **12.1 Mechanism of Action**

Zolpidem is a GABA A receptor positive modulator presumed to exert its therapeutic effects in the short-term treatment of insomnia through binding to the benzodiazepine site of  $\alpha 1$  subunit containing GABA A receptors, increasing the frequency of chloride channel opening resulting in the inhibition of neuronal excitation.

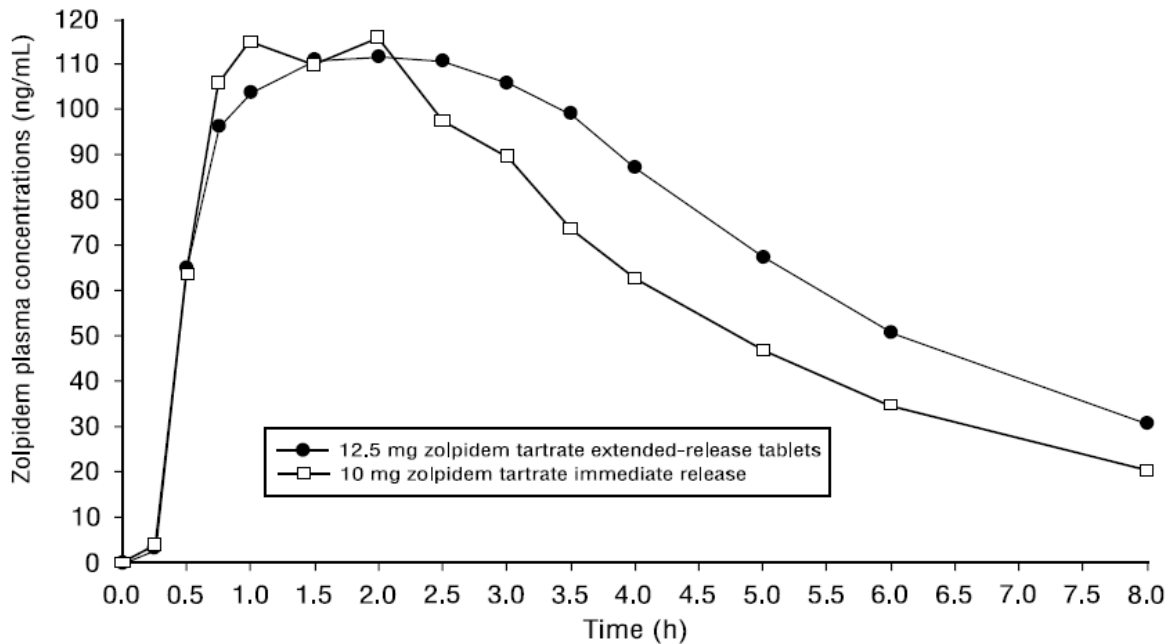
### **12.2 Pharmacodynamics**

Zolpidem binds to GABA A receptors with greater affinity for  $\alpha 1$  subunit relative to  $\alpha 2$  and  $\alpha 3$  subunit containing receptors. Zolpidem has no appreciable binding affinity for  $\alpha 5$  subunit containing GABA A receptors. This binding profile may explain the relative absence of myorelaxant effects in animal studies. Zolpidem has no appreciable binding affinity for dopaminergic D2, serotonergic 5HT<sub>2</sub>, adrenergic, histaminergic or muscarinic receptors.

### **12.3 Pharmacokinetics**

Zolpidem tartrate extended-release tablets exhibits biphasic absorption characteristics, which results in rapid initial absorption from the gastrointestinal tract similar to zolpidem tartrate immediate-release, then provides extended plasma concentrations beyond three hours after administration. A study in 24 healthy male subjects was conducted to compare mean zolpidem plasma concentration-time profiles obtained after single oral administration of zolpidem tartrate extended-release tablets 12.5 mg and of an immediate-release formulation of zolpidem tartrate (10 mg). The terminal elimination half-life observed with zolpidem tartrate extended-release tablets (12.5 mg) were similar to that obtained with immediate-release zolpidem tartrate (10 mg). The mean plasma concentration-time profiles are shown in Figure 1.

**Figure 1: Mean Plasma Concentration-Time Profiles for Zolpidem Tartrate Extended-Release Tablets (12.5 mg) and Immediate-Release Zolpidem Tartrate (10 mg)**



In adult and elderly patients treated with zolpidem tartrate extended-release tablets, there was no evidence of accumulation after repeated once-daily dosing for up to two weeks.

### ***Absorption***

Following administration of zolpidem tartrate extended-release tablets, administered as a single 12.5 mg dose in healthy male adult subjects, the mean peak concentration ( $C_{max}$ ) of zolpidem was 134 ng/mL (range: 68.9 to 197 ng/ml) occurring at a median time ( $T_{max}$ ) of 1.5 hours. The mean AUC of zolpidem was 740 ng·hr/mL (range: 295 to 1359 ng·hr/mL).

A food-effect study in 45 healthy subjects compared the pharmacokinetics of zolpidem tartrate extended-release tablets 12.5 mg when administered while fasting or within 30 minutes after a meal. Results demonstrated that with food, mean AUC and  $C_{max}$  were decreased by 23% and 30%, respectively, while median  $T_{max}$  was increased from 2 hours to 4 hours. The half-life was not changed. These results suggest that, for faster sleep onset, zolpidem tartrate extended-release tablets should not be administered with or immediately after a meal.

### ***Distribution***

Total protein binding was found to be  $92.5 \pm 0.1\%$  and remained constant, independent of concentration between 40 and 790 ng/mL.

### ***Metabolism***

Zolpidem is converted to inactive metabolites that are eliminated primarily by renal excretion.

### ***Elimination***

When zolpidem tartrate extended-release tablet was administered as a single 12.5 mg dose in healthy male adult subjects, the mean zolpidem elimination half-life was 2.8 hours (range: 1.62 to 4.05 hr).

### **Special Populations**

#### ***Elderly***

In 24 elderly ( $\geq 65$  years) healthy subjects administered a single 6.25 mg dose of zolpidem tartrate extended-release tablets, the mean peak concentration ( $C_{max}$ ) of zolpidem was 70.6 (range: 35.0 to 161) ng/mL occurring at a median time ( $T_{max}$ ) of 2.0 hours. The mean AUC of zolpidem was 413 ng·hr/mL (range: 124 to 1190 ng·hr/mL) and the mean elimination half-life was 2.9 hours (range: 1.59 to 5.50 hours).

#### ***Hepatic impairment***

Zolpidem tartrate extended-release tablets were not studied in patients with hepatic impairment. The pharmacokinetics of an immediate-release formulation of zolpidem tartrate in eight patients with chronic hepatic insufficiency was compared to results in healthy subjects. Following a single 20 mg oral zolpidem tartrate dose, mean  $C_{max}$  and AUC were found to be two times (250 vs 499 ng/mL) and five times (788 vs 4,203 ng·hr/mL) higher, respectively, in hepatically compromised patients.  $T_{max}$  did not change. The mean half-life in cirrhotic patients of 9.9 hr (range: 4.1 to 25.8 hr) was greater than that observed in normal subjects of 2.2 hr (range: 1.6 to 2.4 hr) [see *DOSAGE AND ADMINISTRATION (2.2)*, *WARNINGS AND PRECAUTIONS (5.8)*, *USE IN SPECIFIC POPULATIONS (8.7)*].

#### ***Renal impairment***

Zolpidem tartrate extended-release tablets were not studied in patients with renal impairment. The pharmacokinetics of an immediate-release formulation of zolpidem tartrate were studied in 11 patients with end-stage renal failure (mean  $Cl_{Cr} = 6.5 \pm 1.5$  mL/min) undergoing hemodialysis three times a week, who were dosed with zolpidem tartrate 10 mg orally each day for 14 or 21 days. No statistically significant differences were observed for  $C_{max}$ ,  $T_{max}$ , half-life, and AUC between the first and last day of drug administration when baseline concentration adjustments were made. Zolpidem was not hemodialyzable. No accumulation of unchanged drug appeared after 14 or 21 days. Zolpidem pharmacokinetics was not significantly different in renally impaired patients. No dosage adjustment is necessary in patients with compromised renal function.

### **Drug Interactions**

#### ***CNS depressants***

Coadministration of zolpidem with other CNS depressants increases the risk of CNS depression [see *WARNINGS AND PRECAUTIONS (5.2)*]. Zolpidem tartrate was evaluated in healthy volunteers in single-dose interaction studies for several CNS drugs. Imipramine in combination with zolpidem produced no pharmacokinetic interaction other than a 20% decrease in peak levels of imipramine, but there was an additive effect of decreased alertness. Similarly, chlorpromazine in combination with zolpidem produced no pharmacokinetic interaction, but there was an additive effect of decreased alertness and psychomotor performance.

A study involving haloperidol and zolpidem revealed no effect of haloperidol on the pharmacokinetics or pharmacodynamics of zolpidem. The lack of a drug interaction following single-dose administration does not predict the absence of an effect following chronic administration.

An additive adverse effect on psychomotor performance between alcohol and oral zolpidem was demonstrated [*see WARNINGS AND PRECAUTIONS (5.2)*].

Following five consecutive nightly doses at bedtime of oral zolpidem tartrate 10 mg in the presence of sertraline 50 mg (17 consecutive daily doses, at 7:00 am, in healthy female volunteers), zolpidem  $C_{max}$  was significantly higher (43%) and  $T_{max}$  was significantly decreased (-53%). Pharmacokinetics of sertraline and N-desmethylsertraline were unaffected by zolpidem.

A single-dose interaction study with zolpidem tartrate 10 mg and fluoxetine 20 mg at steady-state levels in male volunteers did not demonstrate any clinically significant pharmacokinetic or pharmacodynamic interactions. When multiple doses of zolpidem and fluoxetine were given at steady state and the concentrations evaluated in healthy females, an increase in the zolpidem half-life (17%) was observed. There was no evidence of an additive effect in psychomotor performance.

#### ***Drugs that affect drug metabolism via cytochrome P450***

Some compounds known to inhibit CYP3A may increase exposure to zolpidem. The effect of inhibitors of other P450 enzymes on the pharmacokinetics of zolpidem is unknown.

A single-dose interaction study with zolpidem tartrate 10 mg and itraconazole 200 mg at steady-state levels in male volunteers resulted in a 34% increase in  $AUC_{0-\infty}$  of zolpidem tartrate. There were no pharmacodynamic effects of zolpidem detected on subjective drowsiness, postural sway, or psychomotor performance.

A single-dose interaction study with zolpidem tartrate 10 mg and rifampin 600 mg at steady-state levels in female subjects showed significant reductions of the AUC (-73%),  $C_{max}$  (-58%), and  $T_{1/2}$  (-36 %) of zolpidem together with significant reductions in the pharmacodynamic effects of zolpidem tartrate. Rifampin, a CYP3A4 inducer, significantly reduced the exposure to and the pharmacodynamic effects of zolpidem [*see DRUG INTERACTIONS (7.2)*].

Similarly, St. John's wort, a CYP3A4 inducer, may also decrease the blood levels of zolpidem.

A single-dose interaction study with zolpidem tartrate 5 mg and ketoconazole, a potent CYP3A4 inhibitor, given as 200 mg twice daily for 2 days increased  $C_{max}$  of zolpidem (30%) and the total AUC of zolpidem (70%) compared to zolpidem alone and prolonged the elimination half-life (30 %) along with an increase in the pharmacodynamic effects of zolpidem [*see DRUG INTERACTIONS (7.2)*].

Additionally, fluvoxamine (a strong inhibitor of CYP1A2 and a weak inhibitor of CYP3A4 and CYP2C9) and ciprofloxacin (a strong inhibitor of CYP1A2 and a moderate inhibitor of

CYP3A4) are also likely to inhibit zolpidem's metabolic pathways, potentially leading to an increase in zolpidem exposure.

***Other drugs with no interactions with zolpidem***

A study involving cimetidine/zolpidem tartrate and ranitidine/zolpidem tartrate combinations revealed no effect of either drug on the pharmacokinetics or pharmacodynamics of zolpidem.

Zolpidem tartrate had no effect on digoxin pharmacokinetics and did not affect prothrombin time when given with warfarin in healthy subjects.

## **13 NONCLINICAL TOXICOLOGY**

### **13.1 Carcinogenesis, Mutagenesis, Impairment of Fertility**

***Carcinogenesis***

Zolpidem was administered to mice and rats for 2 years at oral doses of 4, 18, and 80 mg base/kg/day. In mice, these doses are approximately 2, 9, and 40 times the MRHD of 12.5 mg/day (10 mg zolpidem base) based on mg/m<sup>2</sup> body surface area and in rats, these doses are approximately 4, 18, and 80 times the MRHD based on mg/m<sup>2</sup> body surface area. No evidence of carcinogenic potential was observed in mice. In rats, renal tumors (lipoma, liposarcoma) were seen at the mid and high doses.

***Mutagenesis***

Zolpidem was negative in *in vitro* (bacterial reverse mutation, mouse lymphoma, and chromosomal aberration) and *in vivo* (mouse micronucleus) genetic toxicology assays.

***Impairment of Fertility***

Zolpidem was administered to rats at 4, 20, and 100 mg base/kg/day, which are approximately 4, 20, and 100 times the MRHD of 12.5 mg/day (10 mg zolpidem base) based on mg/m<sup>2</sup> body surface area, prior to and during mating, and continuing in females through postpartum day 25. Zolpidem caused irregular estrus cycles and prolonged precoital intervals at the highest dose tested, which is approximately 100 times the MRHD based on mg/m<sup>2</sup> body surface area. The NOAEL for these effects is 20 times the MRHD based on mg/m<sup>2</sup> body surface area. There was no impairment of fertility at any dose tested.

## **14 CLINICAL STUDIES**

### **14.1 Controlled Clinical Trials**

Zolpidem tartrate extended-release tablets were evaluated in three placebo-controlled studies for the treatment of patients with chronic primary insomnia (as defined in the APA Diagnostic and Statistical Manual of Mental Disorders, DSM IV<sup>TM</sup>).

Adult outpatients (18 to 64 years) with primary insomnia (N=212) were evaluated in a double-blind, randomized, parallel-group, 3-week trial comparing zolpidem tartrate extended-release tablets 12.5 mg and placebo. Zolpidem tartrate extended-release tablets 12.5 mg decreased wake time after sleep onset (WASO) for the first 7 hours during the first 2 nights and for the first 5 hours after 2 weeks of treatment. Zolpidem tartrate extended-release tablets 12.5 mg were superior to placebo on objective measures (polysomnography recordings) of sleep induction (by decreasing latency to persistent sleep [LPS]) during the first 2 nights of treatment



and after 2 weeks of treatment. Zolpidem tartrate extended-release tablets 12.5 mg were also superior to placebo on the patient reported global impression regarding the aid to sleep after the first 2 nights and after 3 weeks of treatment.

Elderly outpatients ( $\geq 65$  years) with primary insomnia (N=205) were evaluated in a double-blind, randomized, parallel-group, 3-week trial comparing zolpidem tartrate extended-release tablets 6.25 mg and placebo. Zolpidem tartrate extended-release tablets 6.25 mg decreased wake time after sleep onset (WASO) for the first 6 hours during the first 2 nights and the first 4 hours after 2 weeks of treatment. Zolpidem tartrate extended-release tablets 6.25 mg were superior to placebo on objective measures (polysomnography recordings) of sleep induction (by decreasing LPS) during the first 2 nights of treatment and after 2 weeks on treatment. Zolpidem tartrate extended-release tablets 6.25 mg were superior to placebo on the patient reported global impression regarding the aid to sleep after the first 2 nights and after 3 weeks of treatment.

In both studies, in patients treated with zolpidem tartrate extended-release tablets, polysomnography showed increased wakefulness at the end of the night compared to placebo-treated patients.

In a 24-week double-blind, placebo controlled, randomized study in adult outpatients (18 to 64 years) with primary insomnia (N=1025), zolpidem tartrate extended-release tablets 12.5 mg administered as needed (3 to 7 nights per week) was superior to placebo over 24 weeks, on patient global impression regarding aid to sleep, and on patient-reported specific sleep parameters for sleep induction and sleep maintenance with no significant increased frequency of drug intake observed over time.

## **14.2 Studies Pertinent to Safety Concerns for Sedative/Hypnotic Drugs**

### ***Next-Day Residual Effects***

In five clinical studies (three controlled studies in adults [18 to 64 years of age] administered zolpidem tartrate extended-release tablets 12.5 mg and two controlled studies in the elderly [ $\geq 65$  years of age] administered zolpidem tartrate extended-release tablets 6.25 mg or 12.5 mg), the effect of zolpidem tartrate extended-release tablets on vigilance, memory, or motor function were assessed using neurocognitive tests. In these studies, no significant decrease in performance was observed eight hours after a nighttime dose. In addition, no evidence of next-day residual effects was detected with zolpidem tartrate extended-release tablets 12.5 mg and 6.25 mg using self-ratings of sedation.

During the 3-week studies, next-day somnolence was reported by 15% of the adult patients who received 12.5 mg zolpidem tartrate extended-release tablets versus 2% of the placebo group; next-day somnolence was reported by 6% of the elderly patients who received 6.25 mg zolpidem tartrate extended-release tablets versus 5% of the placebo group [*see ADVERSE REACTIONS (6)*]. In a 6-month study, the overall incidence of next-day somnolence was 5.7% in the zolpidem tartrate extended-release tablets group as compared to 2% in the placebo group.

### ***Rebound Effects***

Rebound insomnia, defined as a dose-dependent worsening in sleep parameters (latency, sleep efficiency, and number of awakenings) compared with baseline following discontinuation of treatment, is observed with short- and intermediate-acting hypnotics. In the two 3-week placebo-controlled studies in patients with primary insomnia, a rebound effect was only observed on the first night after abrupt discontinuation of zolpidem tartrate extended-release tablets. On the second night, there was no worsening compared to baseline in the zolpidem tartrate extended-release tablets group.

In a 6-month placebo-controlled study in which zolpidem tartrate extended-release tablets were taken as needed (3 to 7 nights per week), within the first month a rebound effect was observed for Total Sleep Time (not for WASO) during the first night off medication. After this first month period, no further rebound insomnia was observed. After final treatment discontinuation no rebound was observed.

## **16 HOW SUPPLIED/STORAGE AND HANDLING**

Zolpidem tartrate extended-release tablets USP, 6.25 mg are composed of two layers\* and are pink colored, round, biconvex, film-coated tablets debossed with “E61” on one side and “LU” on the other side and supplied as:

<b>NDC Number</b>	<b>Package Configuration</b>
68180-779-04	Bottle of 100

Zolpidem tartrate extended-release tablets USP, 12.5 mg are composed of two layers\* and are blue colored, round, biconvex, film-coated tablets debossed with “E62” on one side and “LU” on the other side and supplied as:

<b>NDC Number</b>	<b>Package Configuration</b>
68180-780-04	Bottle of 100

\*Layers are covered by the coating and are indistinguishable.

Store at 25°C (77°F); excursions permitted to 15° to 30°C (59° to 86°F) [See USP Controlled Room Temperature].

## **17 PATIENT COUNSELING INFORMATION**

Advise the patient to read the FDA-approved patient labeling (Medication Guide).

Inform patients and their families about the benefits and risks of treatment with zolpidem tartrate extended-release tablets. Inform patients of the availability of a Medication Guide and instruct them to read the Medication Guide prior to initiating treatment with zolpidem tartrate extended-release tablets and with each prescription refill. Review the zolpidem tartrate extended-release tablets Medication Guide with every patient prior to initiation of treatment. Instruct patients or caregivers that zolpidem tartrate extended-release tablets should be taken only as prescribed.

### **Complex Sleep Behaviors**

Instruct patients and their families that zolpidem tartrate extended-release tablets may cause complex sleep behaviors, including sleep-walking, sleep-driving, preparing and eating food, making phone calls, or having sex while not being fully awake. Serious injuries and death have occurred during complex sleep behavior episodes. Tell patients to discontinue zolpidem tartrate extended-release tablets and notify their healthcare provider immediately if they develop any of these symptoms [*see BOXED WARNING, WARNINGS AND PRECAUTIONS (5.1)*].

### **CNS-Depressant Effects and Next-Day Impairment**

Tell patients that zolpidem tartrate extended-release tablets can cause next-day impairment even when used as prescribed, and that this risk is increased if dosing instructions are not carefully followed. Caution patients against driving and other activities requiring complete mental alertness the day after use. Inform patients that impairment can be present despite feeling fully awake. Advise patients that increased drowsiness and decreased consciousness may increase the risk of falls in some patients [*see WARNINGS AND PRECAUTIONS (5.2)*].

### **Severe Anaphylactic and Anaphylactoid Reactions**

Inform patients that severe anaphylactic and anaphylactoid reactions have occurred with zolpidem. Describe the signs/symptoms of these reactions and advise patients to seek medical attention immediately if any of them occur [*see WARNINGS AND PRECAUTIONS (5.4)*].

### **Suicide**

Tell patients to immediately report any suicidal thoughts.

### **Alcohol and other Drugs**

Ask patients about alcohol consumption, medicines they are taking, and drugs they may be taking without a prescription. Advise patients not to use zolpidem tartrate extended-release tablets if they drank alcohol that evening or before bed.

### **Concomitant Use with Opioids**

Inform patients and caregivers that potentially serious additive effects may occur if zolpidem tartrate extended-release tablets is used with opioids and not to use such drugs concomitantly unless supervised by a healthcare provider [*WARNINGS AND PRECAUTIONS (5.2, 5.7), DRUG INTERACTIONS (7.1)*].

### **Tolerance, Abuse, and Dependence**

Tell patients not to increase the dose of zolpidem tartrate extended-release tablets on their own, and to inform you if they believe the drug “does not work.”

### **Administration Instructions**

Patients should be counseled to take zolpidem tartrate extended-release tablets right before they get into bed and only when they are able to stay in bed a full night (7 to 8 hours) before being active again. Zolpidem tartrate extended-release tablets should not be taken with or immediately after a meal. Advise patients NOT to take zolpidem tartrate extended-release tablets if they drank alcohol that evening.

**Pregnancy**

Advise patients to notify their healthcare provider if they become pregnant or intend to become pregnant during treatment with zolpidem tartrate extended-release tablets. Advise patients that use of zolpidem tartrate extended-release tablets late in the third trimester may cause respiratory depression and sedation in neonates. Advise mothers who used zolpidem tartrate extended-release tablets during the late third trimester of pregnancy to monitor neonates for signs of sleepiness (more than usual), breathing difficulties, or limpness [*see USE IN SPECIFIC POPULATIONS (8.1)*].

**Lactation**

Advise breastfeeding mothers using zolpidem tartrate extended-release tablets to monitor infants for increased sleepiness (more than usual), breathing difficulties, or limpness. Instruct breastfeeding mothers to seek immediate medical care if they notice these signs. A lactating woman may consider pumping and discarding breastmilk during treatment and for 23 hours after zolpidem tartrate extended-release tablets administration to minimize drug exposure to a breastfed infant [*see USE IN SPECIFIC POPULATIONS (8.2)*].

The brands listed are trademarks of their respective owners and are not trademarks of Lupin Pharmaceuticals, Inc. The makers of these brands are not affiliated with and do not endorse Lupin Pharmaceuticals, Inc. or its products.

Manufactured for:

**Lupin Pharmaceuticals, Inc.**  
Baltimore, Maryland 21202  
United States

Manufactured by:

**Lupin Limited**  
Goa 403 722  
INDIA

Revised: October 2023

ID#: 274728

## MEDICATION GUIDE

### Zolpidem Tartrate (zole-PI-dem TAR-trate) Extended-Release Tablets USP, 6.25 mg and 12.5 mg CIV

**Rx only**

**What is the most important information I should know about zolpidem tartrate extended-release tablet?**

**Zolpidem tartrate extended-release tablets may cause serious side effects, including:**

- **Complex sleep behaviors.** After taking zolpidem tartrate extended-release tablets, you may get up out of bed while not being fully awake and do an activity that you do not know you are doing. The next morning, you may not remember that you did anything during the night. These activities may happen with zolpidem tartrate extended-release tablets whether or not you drink alcohol or take other medicines that make you sleepy. Some of these complex sleep behaviors have caused serious injury and death.

People taking zolpidem tartrate extended-release tablets have reported:

- sleep-walking
- sleep-driving
- making and eating food
- talking on the phone
- having sex

**Stop taking zolpidem tartrate extended-release tablet and tell your healthcare provider right away if you find out that you have done any of the above activities after taking zolpidem tartrate extended-release tablets.**

**What is zolpidem tartrate extended-release tablet?**

Zolpidem tartrate extended-release tablet is a prescription sleep medicine used for the treatment of adults who have trouble falling asleep or staying asleep (insomnia).

- It is not known if zolpidem tartrate extended-release tablet is safe and effective in children under the age of 18 years. Zolpidem tartrate extended-release tablet is not recommended for use in children under the age of 18 years
- **Zolpidem tartrate extended-release tablet is a federally controlled substance (C-IV) because it can be abused or lead to dependence.** Keep zolpidem tartrate extended-release tablets in a safe place to protect it from theft. Never give your zolpidem tartrate extended-release tablet to anyone else because it can cause death or harm them. Selling or giving away this medicine is against the law.

**Do not take zolpidem tartrate extended-release tablet if you:**

- have had complex sleep behaviors that happened after taking zolpidem tartrate extended-release tablet in the past. See “**What is the most important information I should know about zolpidem tartrate extended-release tablet?**”
- are allergic to zolpidem or any of the ingredients in zolpidem tartrate extended-release tablets. See the end of this Medication Guide for a complete list of ingredients in zolpidem tartrate extended-release tablets

**Before taking zolpidem tartrate extended-release tablet tell your healthcare provider about all of your medical conditions, including if you:**

- have a history of depression, mental illness, or suicidal thoughts or actions
- have a history of drug or alcohol abuse or addiction
- have kidney or liver disease
- have a lung disease or breathing problems
- have sleep apnea
- have myasthenia gravis
- are pregnant or plan to become pregnant. Taking zolpidem tartrate extended-release tablets in the third trimester of pregnancy may harm your unborn baby
  - Tell your healthcare provider if you become pregnant or plan to become pregnant during treatment with zolpidem tartrate extended-release tablets.
  - Babies born to mothers who take zolpidem tartrate extended-release tablets during the third trimester of pregnancy may have symptoms of breathing problems and sedation (such as sleepiness or low muscle tone).
- are breastfeeding or plan to breastfeed. zolpidem tartrate extended-release tablets passes into your breast milk. Talk to your healthcare provider about the best way to feed your baby while you take zolpidem tartrate extended-release tablets

**Tell your healthcare provider about all of the medicines you take**, including prescription and over-the-counter medicines, vitamins, and herbal supplements.

Zolpidem tartrate extended-release tablets and other medicines can interact with each other causing serious side effects. Zolpidem tartrate extended-release tablets may affect the way other medicines work, and other medicines may affect how zolpidem tartrate extended-release tablets works.

**Especially tell your healthcare provider if you:**

- take benzodiazepines
- take opioids as it may increase the risk of breathing problems (respiratory depression).
- take tricyclic antidepressants
- take other medicines that can make you sleepy or affect your breathing (including other zolpidem medicines)
- drink alcohol

You can ask your pharmacist for a list of medicines that interact with zolpidem tartrate extended-release tablets.

Know the medicines you take. Keep a list of them to show your healthcare provider and pharmacist when you get a new medicine.

**How should I take zolpidem tartrate extended-release tablets?**

- **Take zolpidem tartrate extended-release tablet exactly as prescribed.** Do not change your dose on your own. Tell your healthcare provider if you think zolpidem tartrate extended-release tablet is not working for you..
- **Zolpidem tartrate extended-release tablet is for short-term use only.** Treatment with zolpidem tartrate extended-release tablet should be as short as possible because the risk of dependence increases the longer you are being treated
- Take **1** zolpidem tartrate extended-release tablet a night right before bedtime

- **Do not take zolpidem tartrate extended-release tablet if you are not able to stay in bed a full night (7 to 8 hours) before you must be active again.**
- You should not take zolpidem tartrate extended-release tablet with or right after a meal. zolpidem tartrate extended-release tablet may help you fall asleep faster if you take it on an empty stomach.
- **Do not** take zolpidem tartrate extended-release tablets if you drank alcohol that evening or before bed
- Swallow zolpidem tartrate extended-release tablets whole. Do not divide, crush, or chew zolpidem tartrate extended-release tablets. If you cannot swallow zolpidem tartrate extended-release tablet whole, tell your healthcare provider. You may need a different medicine.
- Call your healthcare provider if your sleep problems get worse or do not get better within 7 to 10 days. This may mean that there is another condition causing your sleep problems.
- If you take too much zolpidem tartrate extended-release tablets call your healthcare provider or go to the nearest hospital emergency room right away.

#### **What are the possible side effects of zolpidem tartrate extended-release tablets?**

##### **Zolpidem tartrate extended-release tablets may cause serious side effects including:**

- See **“What is the most important information I should know about zolpidem tartrate extended-release tablet?”**
- **Zolpidem tartrate extended-release tablet can make you sleepy or dizzy and can slow your thinking and motor skills.** Next-day sleepiness is common, but can be serious. Because zolpidem tartrate extended-release tablet can make you sleepy or dizzy you are at a higher risk for falls.
  - Do not drive, operate heavy machinery, or do other dangerous activities until you know how zolpidem tartrate extended-release tablet affects you.
  - Do not drink alcohol or take opioids or other medicines that may make you sleepy or dizzy while taking zolpidem tartrate extended-release tablet without first talking to your healthcare provider. When taken with alcohol or other medicines that cause sleepiness or dizziness, zolpidem tartrate extended-release tablet may make your sleepiness or dizziness much worse.
- **Severe allergic reactions.** Symptoms include swelling of the tongue or throat, trouble breathing, and nausea and vomiting. Get emergency medical help if you get these symptoms after taking zolpidem tartrate extended-release tablet.
- **Abnormal thoughts and behavior.** Symptoms include more outgoing or aggressive behavior than normal, confusion (delirium), acting strangely, agitation, hallucinations, worsening of depression, and suicidal thoughts or actions.
- **Risk of suicide and worsening of depression.** Worsening of depression, including suicidal thoughts and actions can happen during treatment with medicines like zolpidem tartrate extended-release tablets. Call your healthcare provider right away if you develop any thoughts of suicide, dying, or worsening depression during treatment with zolpidem tartrate extended-release tablet.
- **Breathing problems.** See **“Before taking zolpidem tartrate extended-release tablets, tell your healthcare provider about all of your medical conditions, including if you:”** Call your healthcare provider or get emergency medical help right away if you develop breathing problems during treatment with zolpidem tartrate extended-release tablets.

- **Problems with your nervous system caused by severe liver disease (hepatic encephalopathy)**
- **Withdrawal symptoms.** You may have withdrawal symptoms if you stop taking zolpidem tartrate extended-release tablets suddenly. Withdrawal symptoms can be serious and include stomach and muscle cramps, vomiting, sweating, shakiness, seizures, and confusion (delirium). Talk to your healthcare provider about slowly stopping zolpidem tartrate extended-release tablets to avoid withdrawal symptoms.

**The most common side effects of zolpidem tartrate extended-release tablets include headache and dizziness.**

These are not all the side effects of zolpidem tartrate extended-release tablets.

Call your doctor for medical advice about side effects. You may report side effects to FDA at 1-800-FDA-1088.

#### **How should I store zolpidem tartrate extended-release tablets?**

Store zolpidem tartrate extended-release tablets at room temperature, 59°F to 77°F (15°C to 25°C).

**Keep zolpidem tartrate extended-release tablets and all medicines out of reach of children.**

#### **General Information about the safe and effective use of zolpidem tartrate extended-release tablets**

Medicines are sometimes prescribed for purposes other than those listed in a Medication Guide. Do not use zolpidem tartrate extended-release tablets for a condition for which it was not prescribed. Do not give zolpidem tartrate extended-release tablets to other people, even if they have the same symptoms that you have. It may harm them. You can ask your healthcare provider or pharmacist for information about zolpidem tartrate extended-release tablets that is written for healthcare professionals.

#### **What are the ingredients in zolpidem tartrate extended-release tablets?**

**Active Ingredient:** Zolpidem tartrate

##### **Inactive Ingredients:**

The 6.25 mg zolpidem tartrate extended-release tablets contain the following inactive ingredients: colloidal silicon dioxide, FD&C Blue # 2 aluminium lake, hypromellose, iron oxide red, lactose monohydrate, magnesium stearate, microcrystalline cellulose, polyethylene glycol, potassium bitartrate, sodium starch glycolate and titanium dioxide.

The 12.5 mg zolpidem tartrate extended-release tablets contain the following inactive ingredients: colloidal silicon dioxide, FD&C Blue # 2 aluminium lake, hypromellose, lactose monohydrate, magnesium stearate, microcrystalline cellulose, polyethylene glycol, potassium bitartrate, sodium starch glycolate and titanium dioxide.

The brands listed are trademarks of their respective owners and are not trademarks of Lupin Pharmaceuticals, Inc. The makers of these brands are not affiliated with and do not endorse Lupin Pharmaceuticals, Inc. or its products.



This Medication Guide has been approved by the U.S. Food and Drug Administration.

Manufactured for:

**Lupin Pharmaceuticals, Inc.**

Baltimore, Maryland 21202

United States

Manufactured by:

**Lupin Limited**

Goa 403 722

INDIA

Revised: April 2022

ID#: 270217